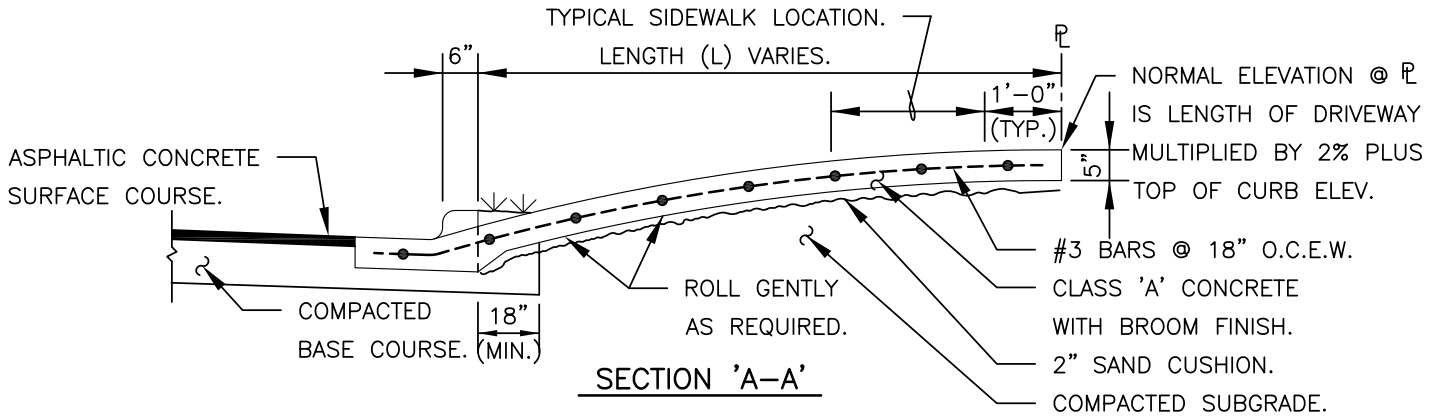
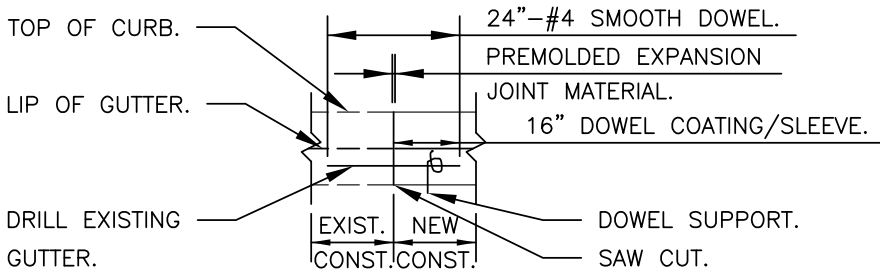


SAW CUT EXISTING CURB AND GUTTER SECTION AT PROPOSED DRIVEWAY. IF NEAREST EXPANSION JOINT IS 5 FEET OR LESS FROM DRIVEWAY WING, EXISTING CURB AND GUTTER SECTION SHALL BE REMOVED AND REPLACED TO THE NEAREST EXPANSION JOINT.

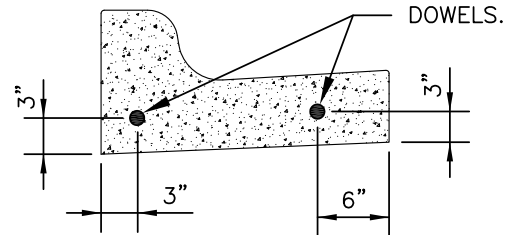
**PLAN**



**SECTION 'A-A'**




**EXPANSION JOINT DETAIL**

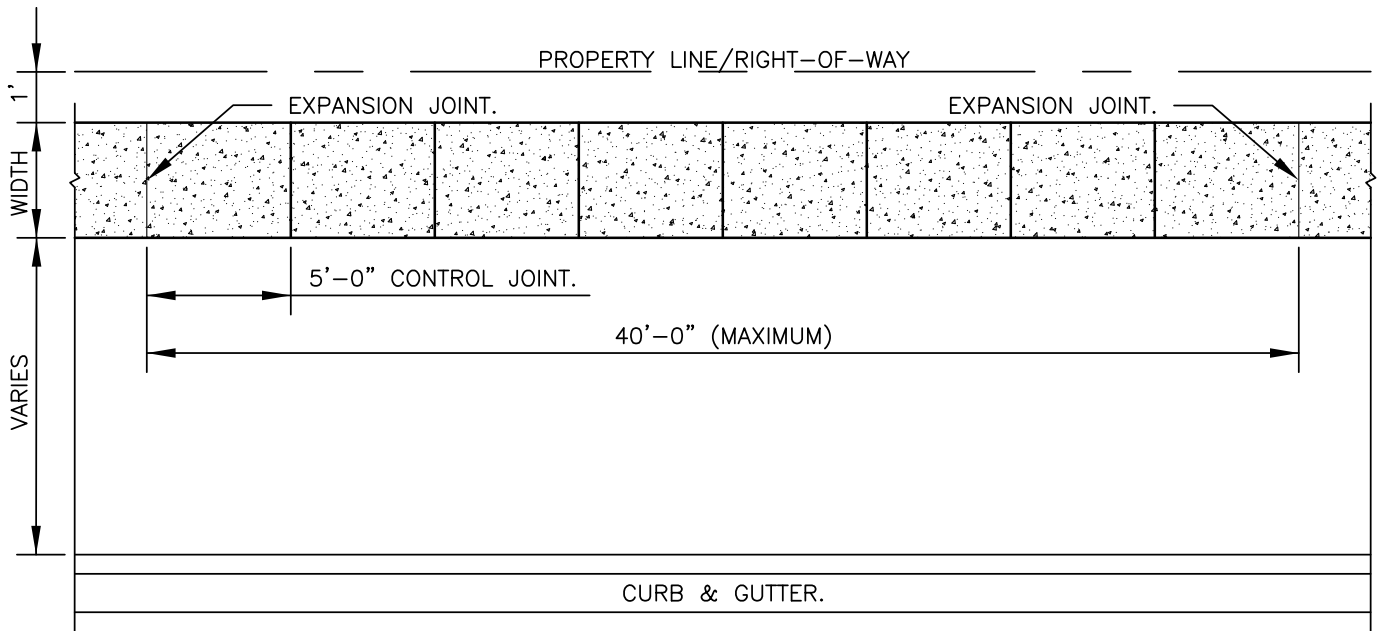


**SECTION**

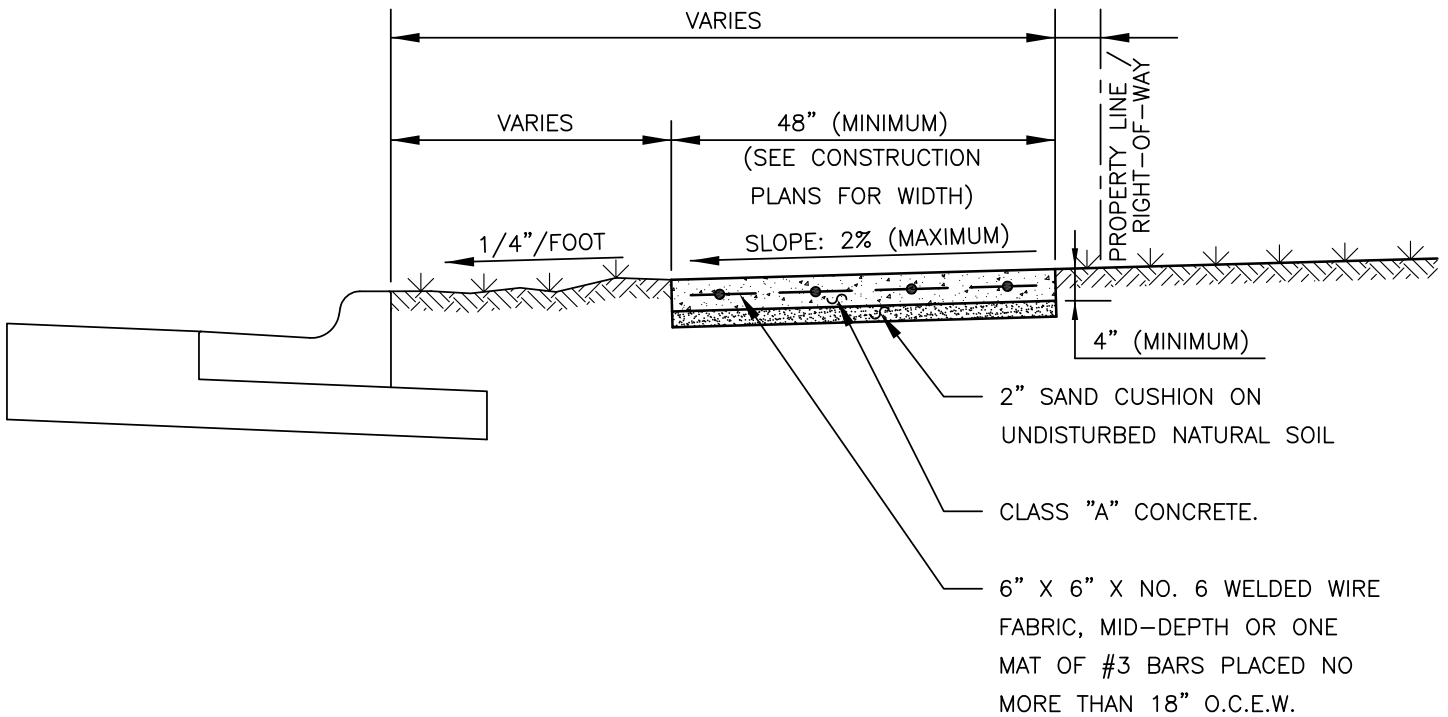
**NOTE:**

1. THE SIDEWALK AREA OF THE DRIVEWAY SHALL SLOPE TOWARD THE STREET PAVING AT NO MORE THAN 2%.

<p>RECORD SIGNED COPY ON FILE AT PUBLIC WORKS APPROVED</p>	<h1>CITY OF BASTROP</h1>	<p>DRAWING NO: ST-02</p>
<p>MAY 24, 2011 DATE</p>	<h2>CONCRETE DRIVEWAY DETAIL (RESIDENTIAL)</h2>	
<p>THE ARCHITECT/ENGINEER ASSUMES RESPONSIBILITY FOR THE APPROPRIATE USE OF THIS DETAIL.</p>		



PLAN



SECTION

RECORD SIGNED COPY  
ON FILE AT PUBLIC WORKS

APPROVED

MAY 24, 2011

DATE

THE ARCHITECT/ENGINEER ASSUMES  
RESPONSIBILITY FOR THE APPROPRIATE  
USE OF THIS DETAIL.

CITY OF BASTROP

SIDEWALK DETAIL

DRAWING NO:  
ST-01

