



Executive Summary

July 2016



What Is A Joint Land Use Study?

A Joint Land Use Study (JLUS) is a cooperative planning effort conducted as a joint venture between an active military installation, surrounding cities and counties, state and federal agencies, organizations and the public to identify and address compatibility issues. These stakeholders are referred to as JLUS Partners. The Camp Swift JLUS was funded through a grant from the Department of Defense (DOD), Office of Economic Adjustment (OEA) and contributions by the City of Bastrop, the JLUS project manager.

The JLUS was developed under the guidance of three main objectives:

Understanding. Increase communication between the military, and other JLUS Partners to promote an understanding of the economic and physical relationship between Camp Swift and its neighbors.

Collaboration. Promote collaborative planning between the JLUS Partners in order to ensure a consistent approach in addressing compatibility issues.

Actions. Develop applicable options for avoiding or reducing the impacts of incompatible activities on the community and military operations.

Why Is It Important to Partner with Camp Swift?

Camp Swift provides unique and irreplaceable assets for the nation's military. The 11,746-acre Maneuver Training Center-Light (MTC-L) provides pre-mobilization and institutional training for the Texas Army National Guard / Texas Military Department (TMD). Camp Swift serves as the premier site for pre-mobilization training for the TMD. Training activities include basic infantry skills, combat engineering skills, maneuver exercises, helicopter operations, personnel/cargo air drops, small arms and pre-serving weapons firing and demolition training. Camp Swift provides these training capabilities through their training areas and ranges, including nine live-fire ranges, a Light Demolition Range, an Improvised Explosive Device Lane, an air assault course, a "gas chamber" for gas-mask training, and drop zones for airborne training. These training areas and facilities are available on a year-round basis to military and civilian organizations, and can accommodate up to a battalion size. A battalion comprises 300 to 1,000 soldiers.



It is important to partner with the installation on relevant and long-range planning projects to ensure the viability and sustainability of the economic impact and community benefit that Camp Swift provides to the local region. The JLUS process strives to deepen the understanding of the mutual benefit shared between the installation and the surrounding region.

25,000

Number of people employed by the Texas Military Department, which includes Camp Swift

140,000

Average number of military and civilian personnel who train at Camp Swift annually

\$2.6M

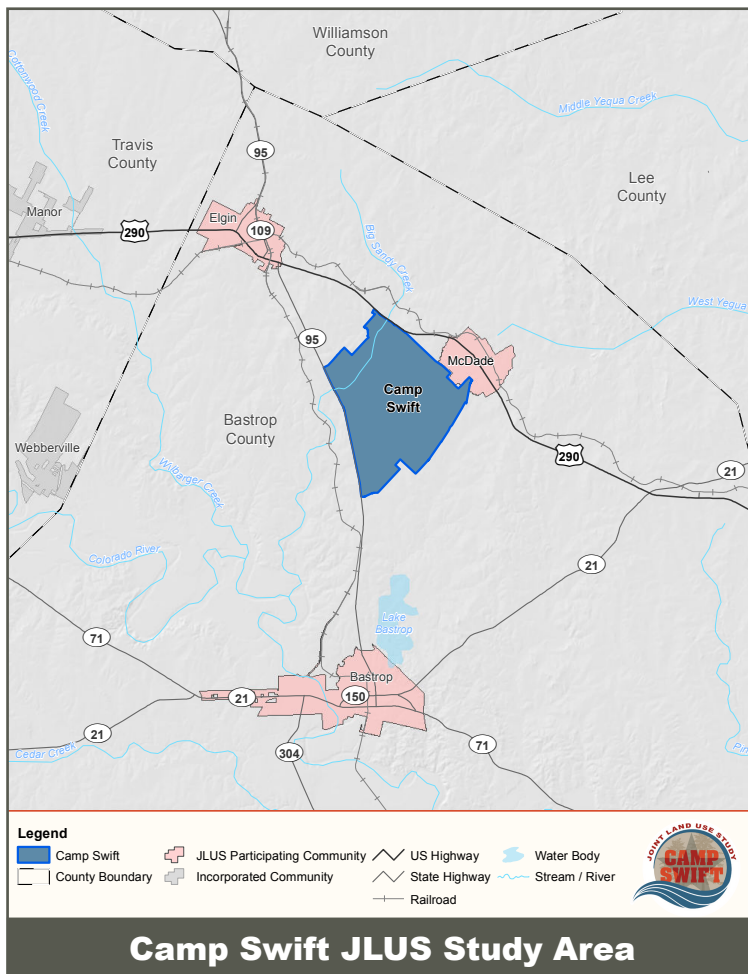
Annual economic benefit to the region provided by the Texas Military Department through Camp Swift

Compatibility Assessment

To provide a comprehensive assessment of potential compatibility issues, the Camp Swift JLUS process looked at 25 compatibility factors (topics), shown on the table to the right. Compatibility, as it relates to military readiness, can be defined as the balance or compromise between community needs and interests and military needs and interests. As a significant employer in Bastrop County, it is important to the health of the regional economy for Camp Swift and the local jurisdictions to work together as partners in compatibility. The goal of compatibility planning is to promote an environment where both community and military can coexist successfully. A number of compatibility factors influence whether community and military plans, programs, and activities are compatible or in conflict with the military mission.

25 Compatibility Factors

AQ	Air Quality	LAS	Land / Air / Sea Spaces
AT	Anti-Terrorism / Force Protection	LU	Land Use
BIO	Biological Resources	LEG	Legislative Initiatives
CA	Climate Adaptation	LG	Light and Glare
COM	Coordination / Communication	MAR	Marine Environments
CR	Cultural Resources	NOI	Noise
DSS	Dust / Smoke / Steam	PT	Public Trespassing
ED	Energy Development	RC	Roadway Capacity
FSC	Frequency Spectrum Capacity	SA	Safety Zones
FSI	Frequency Spectrum Impedance / Interference	SNR	Scarce Natural Resources
LHA	Local Housing Availability	VO	Vertical Obstructions
IE	Infrastructure Extensions	V	Vibration
		WQ	Water Quality / Quantity



The Camp Swift JLUS Study Area was designed to address all lands near Camp Swift that may impact current or future military operations or be impacted by Camp Swift operations. The Camp Swift JLUS Study Area is located in central Texas, and includes land that is situated beneath all of the defined military mission footprints, such as the small arms and IED noise contours, unobstructed clearance area, drop zone obstruction-free area, and the flight corridor. The Study Area covers all of Bastrop County.

Collaborative Planning

The JLUS planning process was designed to create a locally relevant study that builds consensus and obtains support from the stakeholders involved. The public was instrumental in the development of this JLUS by providing their perspective and feedback, both in the JLUS public workshops and through the use of the interactive project website: www.campswiftjlus.com

The development of the project was also guided by two committees composed of JLUS Partner representatives. The two committees were the **Policy Committee**, which provided project oversight, guidance, and decision-making, and the **Technical Committee**, which assisted in the identification and assessment of compatibility issues, development of recommended options, and overall report development.



The Camp Swift JLUS was conducted as a collaborative planning effort that included the following project partners:

- ◆ Bastrop County
- ◆ City of Bastrop
- ◆ City of Elgin
- ◆ Camp Swift / Texas Military Department (TMD)
- ◆ Texas National Guard (TXNG) / Texas Army National Guard (TXARNG)
- ◆ Bastrop Independent School District



JLUS Recommended Options

The heart of the Camp Swift JLUS is the set of 63 recommended options that address the 25 compatibility issues identified. Since the Camp Swift JLUS is the result of a collaborative planning process, the options represent a true consensus plan — a realistic and coordinated approach to compatibility planning developed with the support of stakeholders involved throughout the process. The options developed are uniquely tailored for this JLUS and respect the local context.

The key to the application of the options developed is the establishment of a JLUS Coordination Committee to oversee the JLUS performance after the completion of the study. Through this Committee, the JLUS Partners can continue their initial work together to establish procedures, recommend or refine specific actions, and make adjustments to options over time to ensure the JLUS continues to resolve key compatibility issues. Concurrent with the efforts of the JLUS Coordination

Committee, each JLUS Partner is responsible for establishing their own course of action to apply the options unique to them through collaboration of their leadership, planners, and the public.

The options developed during the JLUS process are described in detail in Chapter 6 of the JLUS Report. The following list provides a highlight of the key options that were developed and agreed to by the JLUS Partners.

Key Options Identified



Coordination / Communication

- ◆ Consider a Camp Swift JLUS Coordination Committee
- ◆ Provide Copies to Camp Swift as One of the Agencies that Review Pre-Development Applications / Proposals
- ◆ Establish Official Facebook and Other Social Media Webpages
- ◆ Develop an Official Website for Camp Swift
- ◆ Enhanced Public Education of the Camp Swift Mission

COMPLETED

Dust, Smoke, and Steam

- ◆ Enhance Notification of Prescribed Burns
- ◆ Communicate with Camp Swift Regarding Proposed Developments that Generate Dust, Smoke, or Steam Within the MAOD
- ◆ Consider Adopting Dust Control Ordinance



Energy Development

- ◆ Consider Coordinating with DOD Siting Clearinghouse
- ◆ “Red, Yellow, Green” Map



Land / Air / Sea Spaces

- ◆ Consider Sharing Unclassified Training Schedule Information with General Aviation (GA) and Personal Aircraft Operators
- ◆ Consider Developing and Sharing Range Avoidance Program
- ◆ Provide Notices to Airmen (NOTAMs) in the Area, Especially Airmen Entering Airspace Over the Installation from the South / Southeast
- ◆ Strobe Light for Nighttime Flight Training

ON-GOING

Land Use

- ◆ Consider Including the Military Awareness Overlay District (MAOD) Information in Available Mapping and Communication Efforts
- ◆ Coordinate Roadway Improvements with TMD / TXNG / Camp Swift
- ◆ Develop An Army Compatible Use Buffer (ACUB) Plan

IN PROGRESS

Light and Glare

- ◆ Consider Amending Lighting Ordinance for Compatible Lighting
- ◆ Consider Developing a Lighting Ordinance



Noise

- ◆ Consider Amending Noise Ordinance
- ◆ Consider Encouraging the Inclusion of Sound Attenuation Building Standards for New Construction
- ◆ Enforce and Inform About the “Fly Neighbor-Friendly” Protocol



Safety

- ◆ Coordinate with Private Property Owners to Have a Boat in Nearby Water Body
- ◆ Red Flags Posted Around Ranges to Indicate “Hot” Status

ON-GOING**ON-GOING**

Vertical Obstructions

- ◆ Development Coordination

Military Awareness Areas (MAAs)

A key to guiding compatible development and activities without overregulation is the establishment of five Military Awareness Areas (MAAs) and a Military Awareness Area Overlay District (MAOD). The MAAs (described below) are used to define the geographic areas where specific JLUS options are to be applied. This technique ensures that options are applied to the appropriate area and that locations deemed not subject to a specific compatibility issue are not adversely impacted by regulations inappropriate for their location or circumstance.



The MAAs were designated to accomplish the following:

- 1 Promote an orderly transition between community and military land uses so that land uses remain compatible;
- 2 Protect public health, safety, and welfare;
- 3 Maintain operational capabilities of military installations and areas;
- 4 Promote an awareness of the size and scope of military training areas to protect areas separate from the actual military installation (e.g., helicopter flight paths) used for training purposes; and
- 5 Establish compatibility requirements within the designated area, such as requirements for coordination of activities and sound attenuation.

Military Awareness Area Overlay District (MAOD)

The Camp Swift MAOD is an area that incorporates all five of the MAAs below.



Unobstructed Clearance Area MAA

This MAA is a 20-foot area from the installation boundary in all directions. Land uses within this MAA should not obstruct the view into and off the installation. This will enable a clear, unobstructed view for Camp Swift to ensure compliance with AT/FP standards well into the future.



Small Arms / Improvised Explosive Device Noise MAA

This MAA is the modeled noise contours for the small arms caliber training area and the Improvised Explosive Device (IED) Lane Course. This MAA includes all land outside the installation within each set of noise zones (NZ). For the small arms range, the NZ III measured at >104 dB PK15(MET) is at the southern end of Camp Swift. For the IED Lane Course, the NZ II measured at 115 dB PK15(MET) and NZ III at 130 dB PK15(MET) areas are at the northeast and southeast areas of Camp Swift.



Demolition Noise MAA

This MAA includes all land under the 2-pound and 40-pound demolition noise contours that are outside the installation.



Drop Zone Obstacle-Free MAA

This MAA includes all land within 1,000 meters of the Blackwell DZ activity area that extends outside the installation.

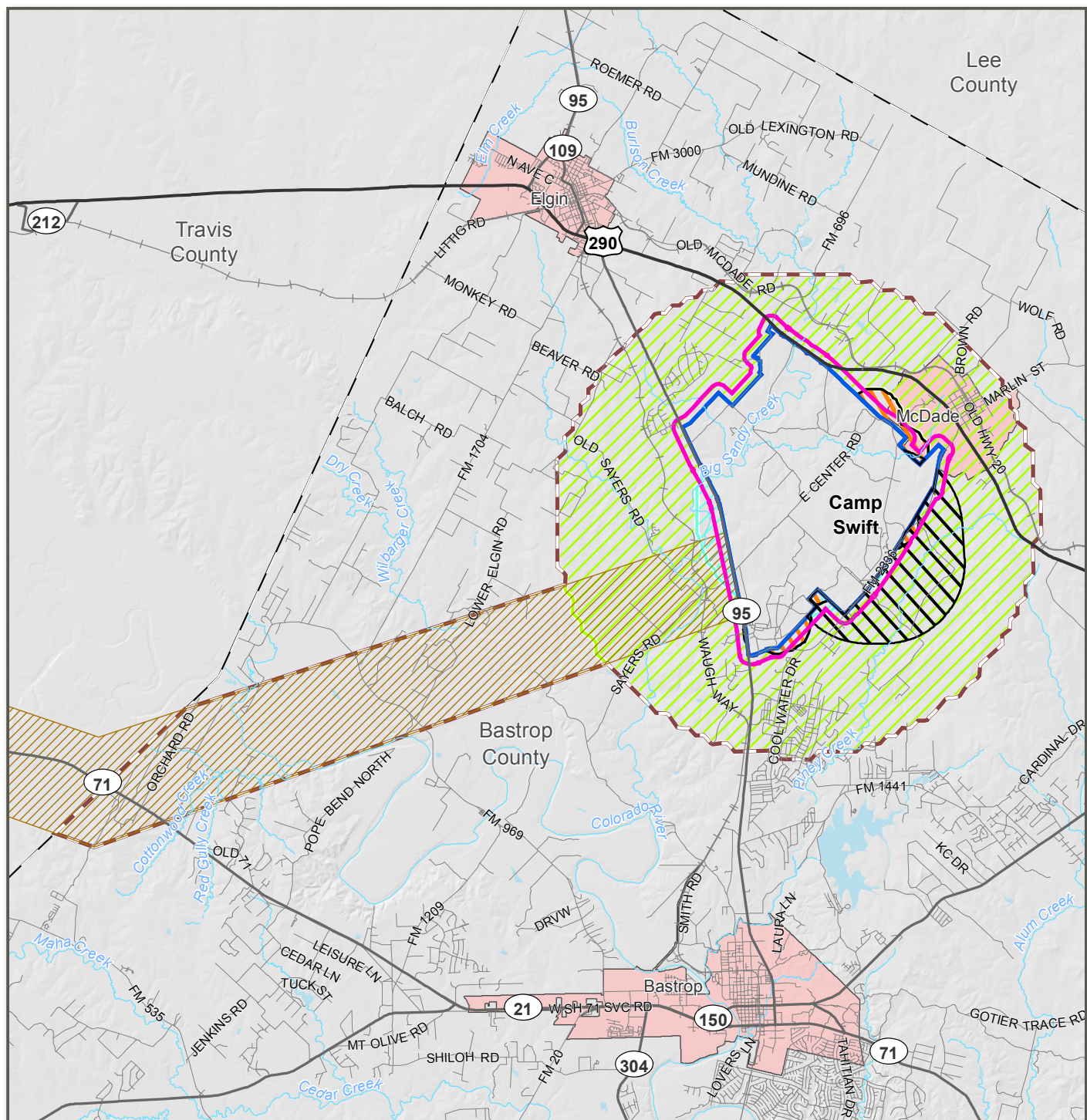


Vertical Obstruction MAA

This MAA comprises the flight corridor that various reservist units use to perform necessary aviation training operations. The map only shows the predominant flight corridor that is located in Bastrop County, which is the Study Area for the Camp Swift JLUS.



EXECUTIVE SUMMARY



Legend

Military Awareness Overlay District

Vertical Obstruction MAA

Unobstructed Clearance Area MAA

Small Arms / IED MAA

Drop Zone Obstacle-Free

Military Awareness Area (1,000 meters from the DZ Activity Area)

Demolition Two Pound Charge Noise Contour

Moderate Complaint Risk 115 dB PK15(MET) Noise MAA Subzone

Demolition 40 Pound Charge Noise Contour

Moderate Complaint Risk 115 dB PK15(MET) Noise MAA Subzone

Camp Swift

County Boundary

JLUS Participating Community

Interstate

US Highway

State Highway

Local Road

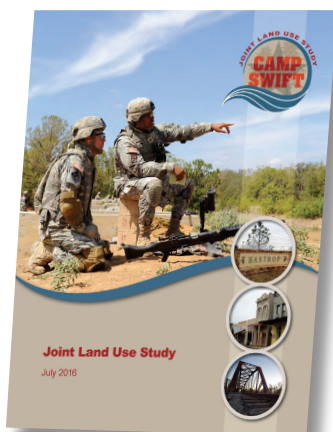
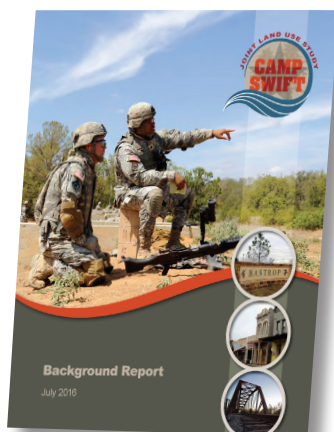
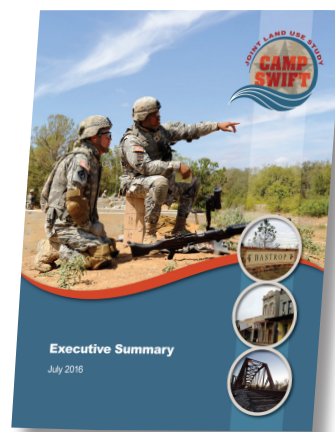
Railroad

Water Body

Stream / River



Camp Swift JLUS Military Awareness Overlay District

**JLUS Report****JLUS Background Report****JLUS Executive Summary**

JLUS Documents

Three JLUS documents, each providing different levels of information, are available to the public, elected and appointed officials, and the military. These documents provide an overview of the JLUS process, detailed information on Camp Swift and the overall Study Area, an assessment of existing compatibility issues, and recommended options in the Recommended Options Portfolio. These resource documents are as follows.

JLUS Report

The JLUS Report presents an overview of the JLUS planning process, purpose and objectives of the study and the Recommended Options Portfolio. The report presents a concise description of the following:

- ◆ JLUS project Study Area, including Camp Swift mission overview;
- ◆ Population profile and economic overview of the communities in the JLUS Study Area;
- ◆ Summary of the factors and compatibility issues identified during the JLUS process; and
- ◆ Set of recommended options to mitigate or prevent encroachment and proactively achieve land use compatibility.

JLUS Background Report

- ◆ The JLUS Background Report provides the technical background and detailed assessment of the compatibility issues identified as part of the JLUS project.

JLUS Executive Summary

- ◆ The JLUS Executive Summary serves as a quick reference describing the purpose of a JLUS and providing an overview of the key JLUS options and Military Awareness Areas.

For Additional Information Contact:



City of Bastrop
Planning and Development
Department
1311 Chestnut Street
Bastrop, Texas 78602
P. 512.332.8840
www.cityofbastrop.org

This study was prepared under contract with the City of Bastrop, with financial support from the Office of Economic Adjustment, Department of Defense. The content reflects the views of the key JLUS Partners involved in the development of this study and does not necessarily reflect the views of the Office of Economic Adjustment.



Rev. 2016 08 17

JOINT LAND USE STUDY

CAMP SWIFT