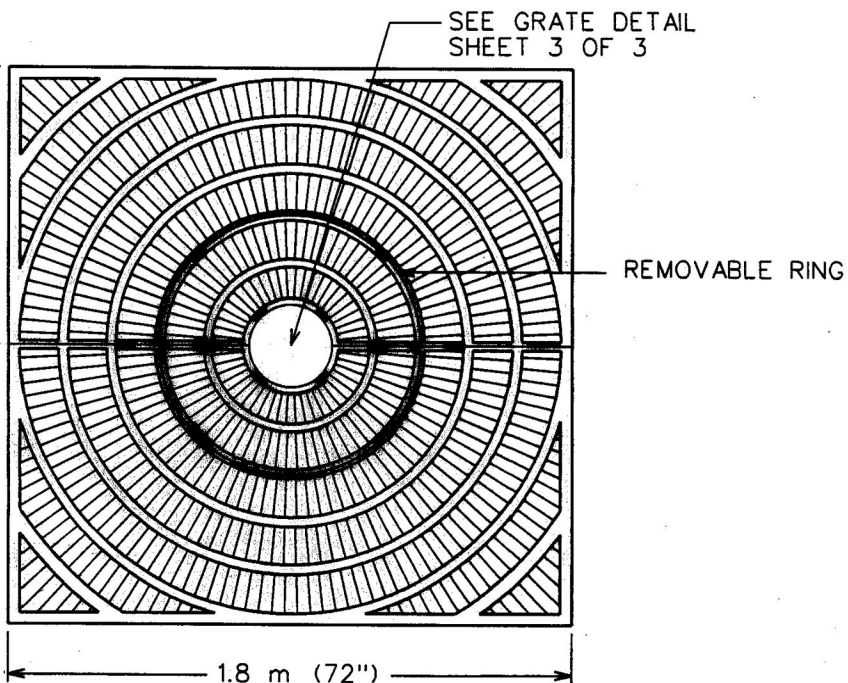
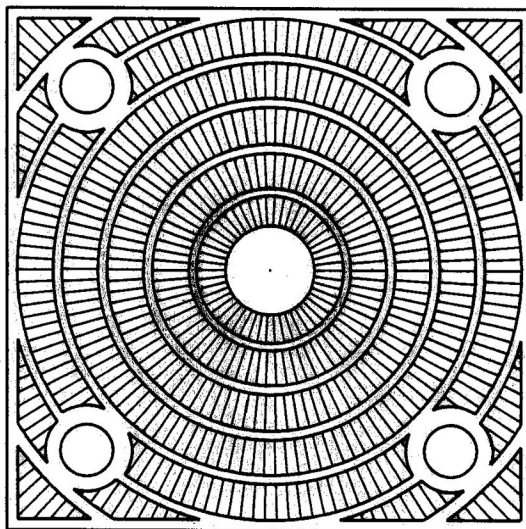


610 mm (24") MIN.
914 mm (36") MAX.
EXPANSION
CAPABILITY



TREE GRATE



TREE GRATE WITH LIGHTING OPENINGS

CITY OF AUSTIN
DEPARTMENT OF PUBLIC WORKS

1.8 m (6') CAST IRON
TREE GRATE AND FRAME

THE ARCHITECT/ENGINEER ASSUMES
RESPONSIBILITY FOR APPROPRIATE USE
OF THIS STANDARD.

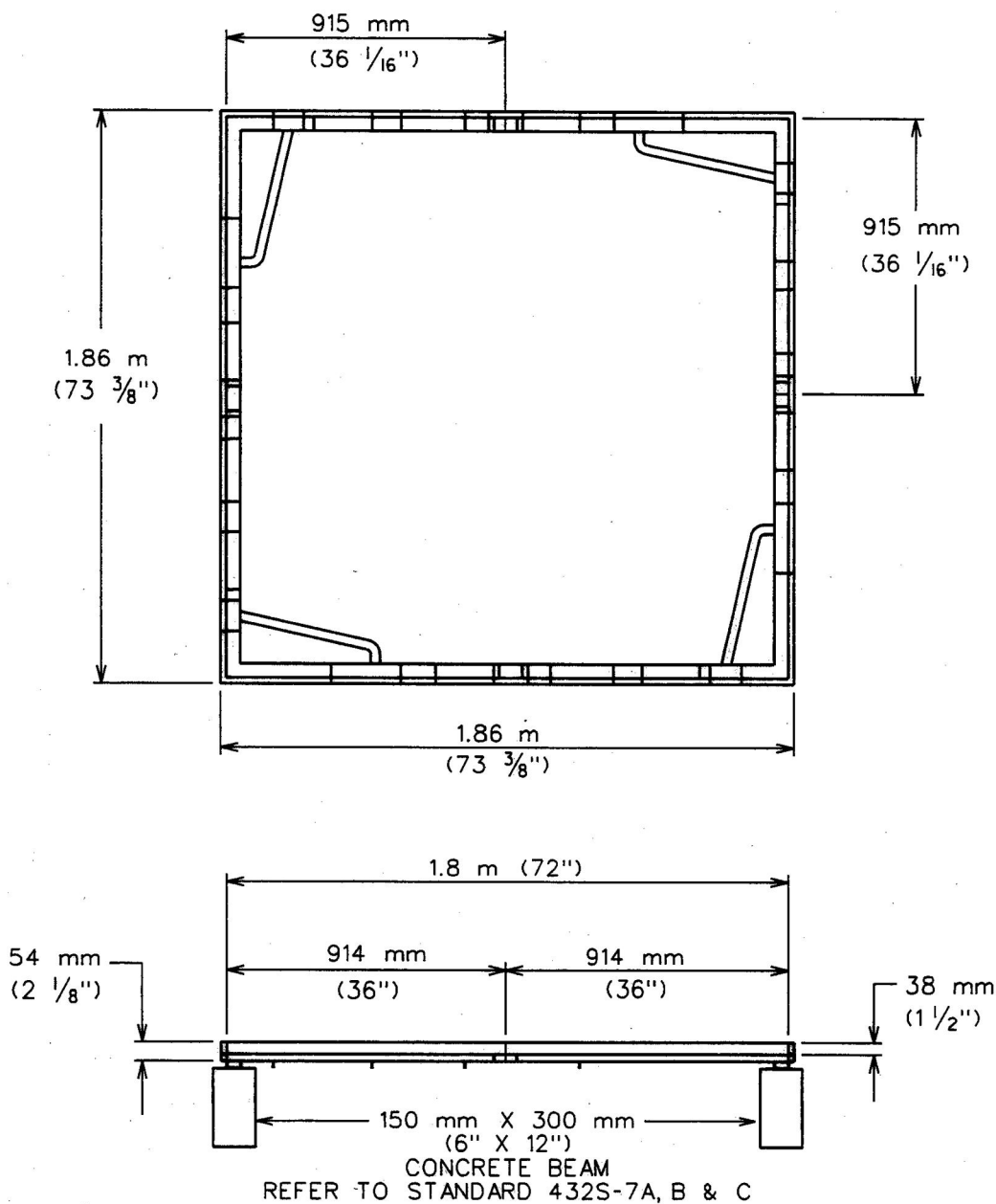
STANDARD NO.

437S-2

1 OF 3

Brie Gardner

11/21/05
ADOPTED



GRATE FRAME (TYPICAL)

CITY OF AUSTIN
DEPARTMENT OF PUBLIC WORKS

1.8 m (6') CAST IRON
TREE GRATE AND FRAME

THE ARCHITECT/ENGINEER ASSUMES
RESPONSIBILITY FOR APPROPRIATE USE
OF THIS STANDARD.

STANDARD NO.

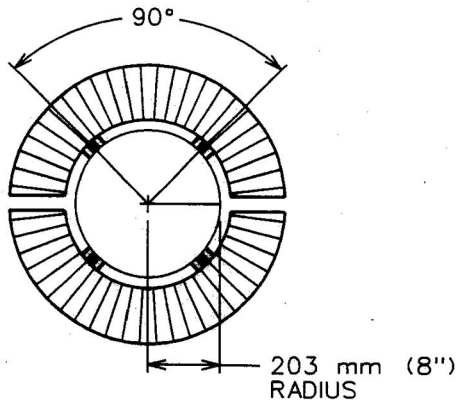
437S-2

2 OF 3

ADOPTED

11/21/05

Bill Gardner



GRATE DETAIL

NOTES:

1. TREE GRATE AND FRAME SHALL BE OF CAST IRON WITH GRAY IRON CASTINGS CONFORMING TO ASTM A-48 CLASS 35 OR BETTER. IF CAST IRONS USED, THEN MATERIAL FINISH MUST BE RESISTANT TO CORROSION.
2. GRATES SHALL BE COMPRISE OF 2 PANELS NO LESS THAN 38 mm (1 1/2") THICK TO RESIST HIGH-STRESS IMPACTS FROM MECHANIZED SIDEWALK CLEANING MACHINES.
3. GRATE OPENINGS SHALL BE 9.5 mm (3/8") OR LESS TO MEET ADA STANDARDS AND PREVENT THE GATHERING OF LEAVES OR LITTER.
4. GRATES SHALL HAVE REMOVABLE INSERT GRATE FOR INCREMENTAL TRUNK GROWTH AND EXPANSION. STREET GRATES WITH EASILY REMOVABLE RING SHOULD USE AN ABRASIVE CUTTING WHEEL OR LASER WATER JET AND NOTCH AT THE RADIAL SPOKES.
5. GRATES ACCOMMODATING SUBGRADE LIGHTING UNITS SHOULD HAVE REMOVABLE LIGHT-OPENING SECTIONS SECURED WITH COUNTER-SUNK SCREWS IN ORDER TO TAMPER-PROOF THE LIGHTING UNITS, IF REQUIRED.
6. GRATES SHOULD BE ABLE TO ACCOMMODATE CUSTOM CORNER LOGOS.

CITY OF AUSTIN
DEPARTMENT OF PUBLIC WORKS

1.8 m (6') CAST IRON
TREE GRATE AND FRAME

THE ARCHITECT/ENGINEER ASSUMES
RESPONSIBILITY FOR APPROPRIATE USE
OF THIS STANDARD.

STANDARD NO.

437S-2

3 OF 3

Bill Gardner
11/2/05
ADOPTED