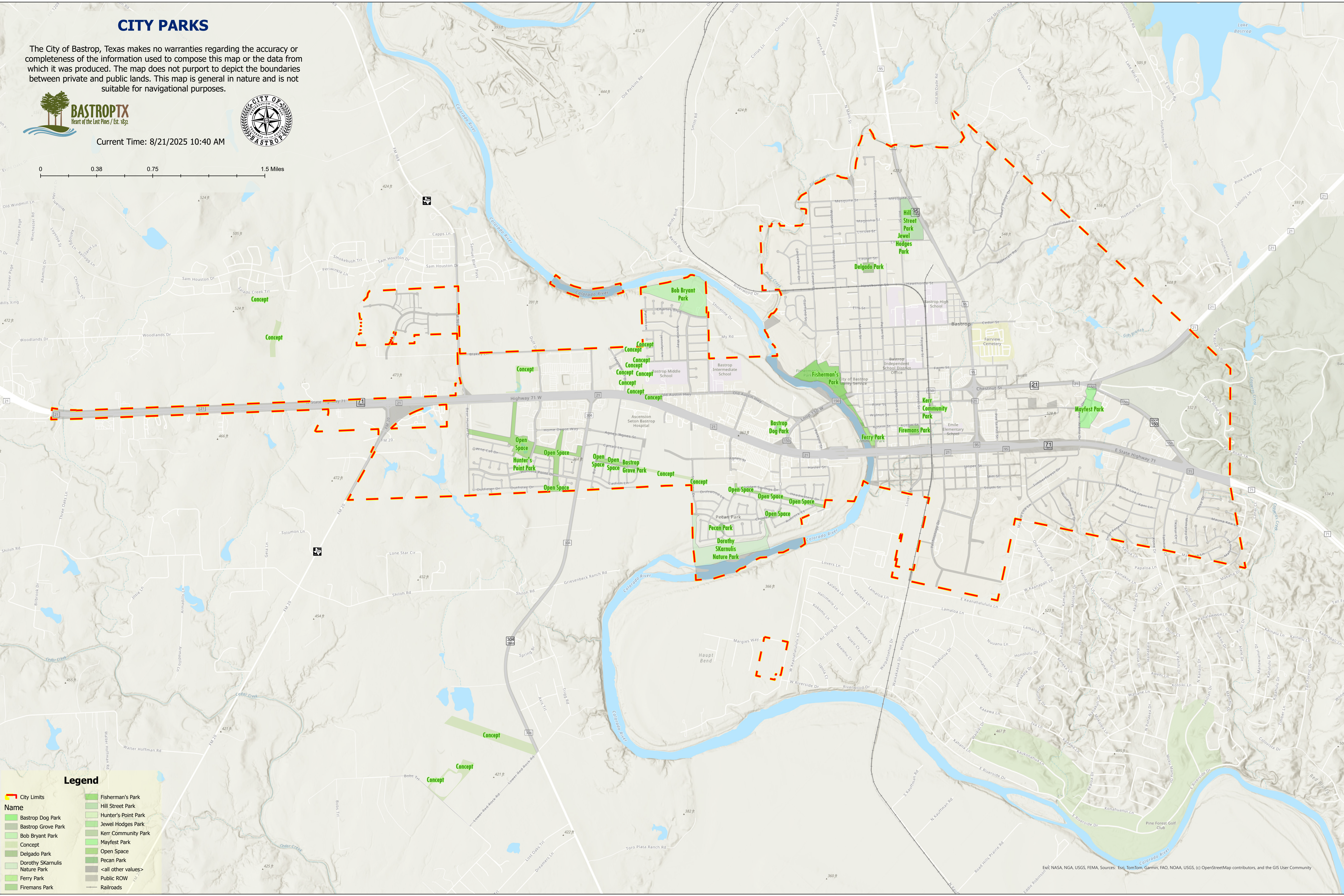
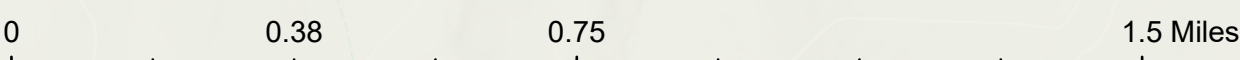


CITY PARKS

The City of Bastrop, Texas makes no warranties regarding the accuracy or completeness of the information used to compose this map or the data from which it was produced. The map does not purport to depict the boundaries between private and public lands. This map is general in nature and is not suitable for navigational purposes.



Current Time: 8/21/2025 10:40 AM



Legend

City Limits

Name

- Bastrop Dog Park
- Bastrop Grove Park
- Bob Bryant Park
- Concept
- Delgado Park
- Dorothy SKarnulis Nature Park
- Ferry Park
- Firemans Park
- Fisherman's Park
- Hill Street Park
- Hunter's Point Park
- Jewel Hodges Park
- Kerr Community Park
- Mayfest Park
- Open Space
- Pecan Park
- <all other values>
- Public ROW
- Railroads

Esri, NASA, NGA, USGS, FEMA, Sources: Esri, TomTom, Garmin, FAO, NOAA, USGS, (c) OpenStreetMap contributors, and the GIS User Community